

Resistor Production Test Using the Agilent B2900A Series

Technical Overview

Agilent B2900A Series Precision Source/Measure Unit

- Agilent B2901A Precision SMU, 1ch, 100fA resolution, 210V, 3A DC/10.5A pulse
- Agilent B2902A Precision SMU, 2ch, 100fA resolution, 210V, 3A DC/10.5A pulse
- Agilent B2911A Precision SMU, 1ch, 10fA resolution, 210V, 3A DC/10.5A pulse
- Agilent B2912A Precision SMU, 2ch, 10fA resolution, 210V, 3A DC/10.5A pulse

Introduction

To ensure compliance with manufacturing specifications, DC testing must be performed on resistors after final assembly. The reliability of this testing is important to guarantee product quality. In addition, it is also essential to perform the tests quickly to keep the production throughput high.

The Agilent B2900A Series of Precision Source/Measure Units meet all of these requirements, making them the best solution for resistor production test. They are compact and cost-effective bench-top Source/Measure Units (SMUs) with the capability to source and measure both voltage and current. They cover currents from 10 fA to 10.5 A and voltages from 100 nV to 210 V. The

B2900A Series has the ability to perform DC measurements as well as pulsed measurements in order to prevent device self-heating from distorting the measurement results. In addition to these comprehensive measurement capabilities, the B2900A Series possesses high throughput that reduces test times. The B2900A Series also has many features that make it well-adapted for production test, such as pass/fail binning, a digital I/O interface for handler control, and code compatibility with standard single and dual channel SMU products.

This technical overview presents examples that illustrate how the B2900A Series can be used for resistor production test.

Easy production test system configuration

Figure 1 shows a conceptual diagram of a B2900A Series based system for production resistor test. The B2900A Series' widely available banana style terminals greatly simplify the test system configuration. As will be discussed later, in most production testing measurement results are compared with pre-defined limits and pass/fail judgments are made. Output signals from the B2900A Series' GPIO port can be used to communicate with the component handler to sort devices based on the pass/fail criteria.

The B2900A Series supports both 2-wire connection and 4-wire connections. A basic 2-wire connection is commonly used for standard resistance measurements, while a 4-wire connection is required for low resistance measurements to eliminate the residual lead resistance (please see Figure 2).

The B2900A Series supports several communication protocols, GPIB, USB and LAN, and these can be used with both SCPI and IVI-COM drivers. SCPI is an industry-standard command set for basic instruments with a uniform structure that supports a common set of commands. The B2900A Series'

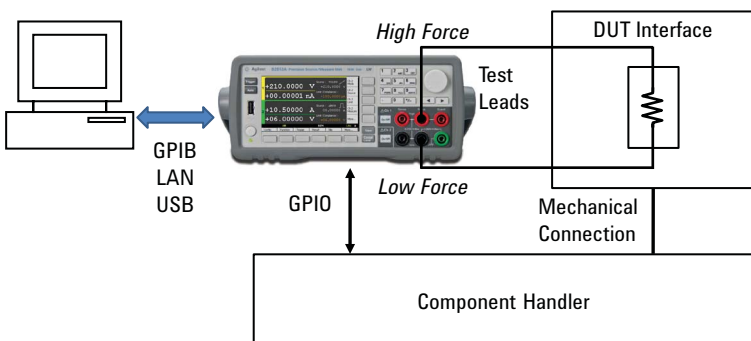


Figure 1. Example test system configuration using the B2900A Series



SCPI command set not only supports its advanced features but also general-purpose SMU commands (such as those used by the Keithley 2400) to simplify test program migration. In addition, the B2900A Series' IVI-COM drivers work in a variety of programming environments and languages, so you can develop programs without having to use low-level commands.

Program memory improves throughput

Fast test times are essential to maximize throughput and maintain high levels of factory productivity. Besides possessing fast intrinsic measurement speed, the B2900A Series has a program memory function that can be used to improve production test throughput. Program memory allows you to store long strings of SCPI command lines once into the B2900A Series' volatile memory and then recall those strings multiple times while the program is executing using a single SCPI command. By storing the command strings in memory, the time that would have been spent sending those same commands over a communication bus is eliminated. For tests that utilize lots of repeated code (such as subroutines), program memory can dramatically reduce test times. Of course, programs can be saved to or loaded from any attached USB flash memory device (please see Figure 3).

The B2900A Series also has a data buffer on each SMU channel that can hold up to 100,000 data points. This enables you to transfer all the data in the buffer at once after a series of measurements have completed instead of having to transfer data after every measurement. One way to use this to improve throughput would be to have the B2900A Series send measurement data to a PC while a component handler places a new device on a DUT interface.

Multiple pass/fail judgment modes

In production test, a limit test function is generally used to eliminate defective devices through a pass/fail judgment based on pre-defined limits. Recognizing that there are a variety of pass/fail limit scenarios, the B2900A Series supports two modes: Compliance mode and Limit mode (up to 12 binning limits possible).

Compliance mode utilizes the B2900A Series' intrinsic compliance feature that allows a limit to be placed on voltage or current output to prevent device damage. When the SMU's output reaches the limit value during a measurement it is in compliance status. If Compliance mode is enabled, then the test fails when the SMU reaches compliance status.

One possible use of this feature is to determine the polarity of nonsymmetrical devices such as diodes.

Limit mode is usually used to determine if a device parameter is within specified low and high limits. When Limit mode is enabled the B2900A Series makes a Pass/Fail judgment based on whether or not the measured value is within specified low and high limits. A typical use of this mode is to perform grading and sorting (please see Figure 4).

After performing pass/fail testing with these modes, you can view the results on the B2900A Series' wide QVGA LCD display. In addition, you can program the B2900A Series to output specified Pass/Fail bit patterns through the GPIO port to other equipment such as handlers for component binning.

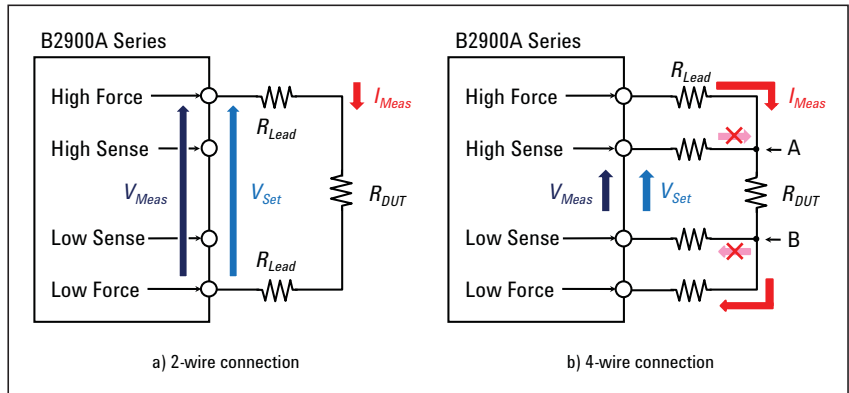


Figure 2. A 4-wire connection eliminates the measurement error caused by residual lead resistance

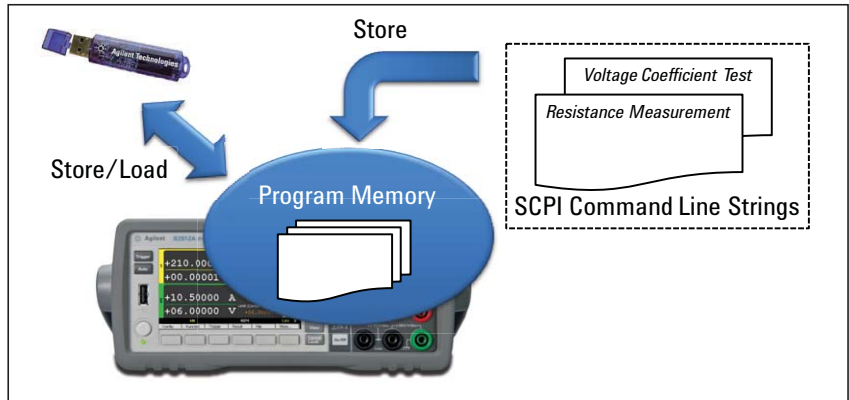


Figure 3. Program memory allows strings of SCPI commands to be stored for later execution

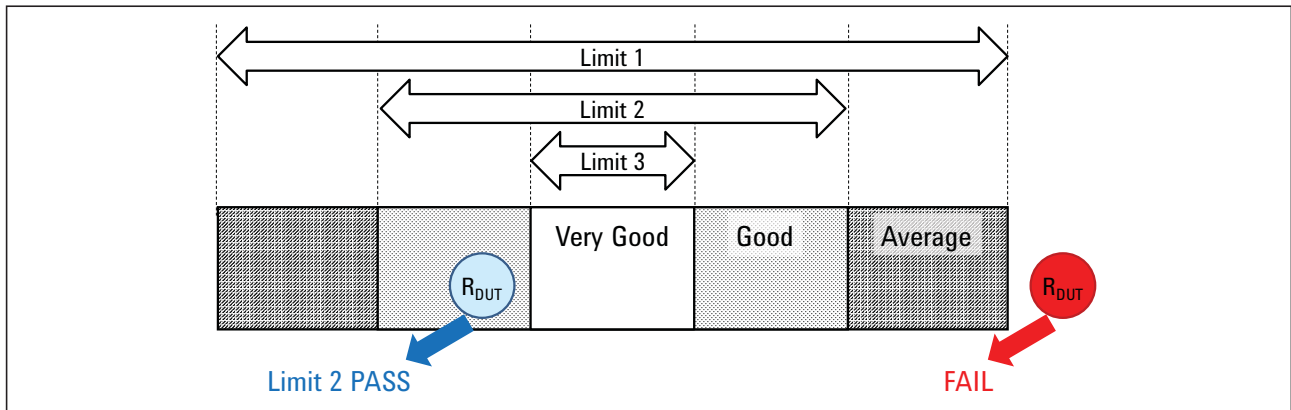


Figure 4. Example showing how Limit mode's pass/fail test capability can be applied to a resistance measurement

Production resistor test flow example

Figure 5 shows a simplified flow for production resistor testing. Before beginning the actual testing, it is good practice to store repeated operations into the B2900A Series' program memory (such as the resistance measurement in this example). After this test pre-loading has been performed and the stored program has been run, the B2900A Series waits for a Start of Test (SOT) trigger from the component handler. Once the resistor is in-place, the handler sends an SOT trigger signal to the B2900A Series to inform it that testing can begin. The B2900A Series first makes a measurement using the programs stored in program memory and displays the Pass/Fail testing result. Then, the B2900A Series sends a specified Pass/Fail bit pattern and an End of Test (EOT) signal to the component handler and stores the test data to the PC. This procedure is then repeated until all of the devices have been tested.

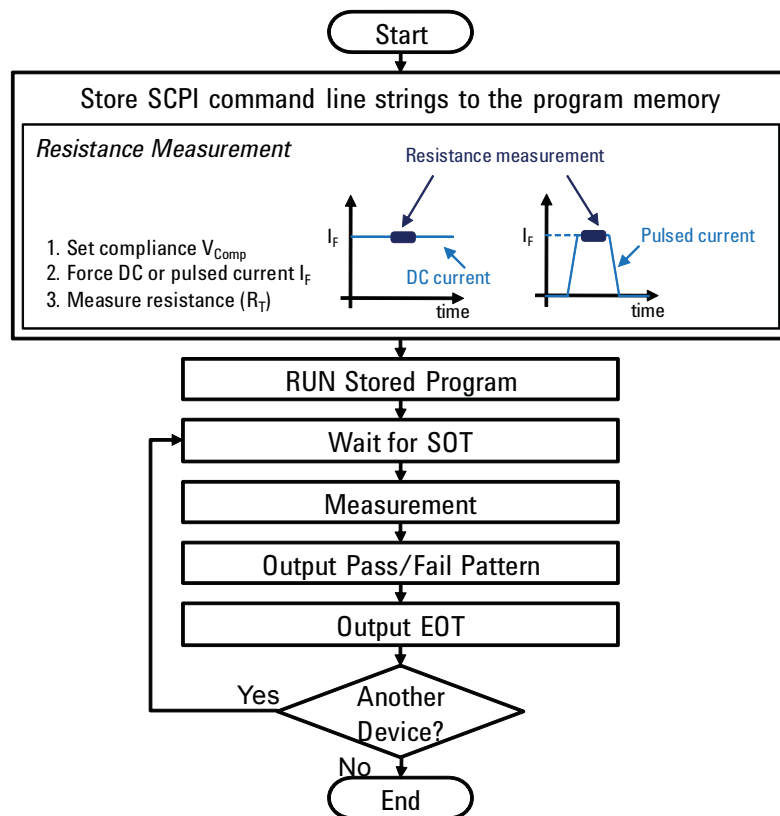


Figure 5. Resistor production test flow example using the B2900A Series

Summary

The Agilent B2900A Series of Precision Source/Measure Units is the best solution for the production testing of resistors and other devices. The B2900A Series possesses high throughput, which greatly reduces test times. In addition, the B2900A Series' program memory function allows the test throughput to be improved even more. The B2900A Series also provides useful features for production test such as pass/fail decision-making, a digital I/O interface for handler control, and program compatibility with standard single and dual channel SMU products.

The B2900A Series is equipped with popular banana style terminals that make it easy to connect to other instruments in a production test system. Both SCPI commands and IVI-COM drivers are available for the B2900A Series for remote control using the GPIB, USB or LAN communication protocols.

Its wide current and voltage measurement ranges (from 10 fA/100 nV to 10.5 A/210 V) provide superior measurement performance and allow you to test devices more accurately and easily than ever before.

For more detailed information on the various B2900A Series models, please refer to the B2900A Series data sheet (5990-7009EN)



Agilent Advantage Services is committed to your success throughout your equipment's lifetime. We share measurement and service expertise to help you create the products that change our world. To keep you competitive, we continually invest in tools and processes that speed up calibration and repair, reduce your cost of ownership, and move us ahead of your development curve.

www.agilent.com/find/advantageservices



www.agilent.com/quality



Agilent Email Updates

www.agilent.com/find/emailupdates

Get the latest information on the products and applications you select.



www.lxistandard.org

LAN eXtensions for Instruments puts the power of Ethernet and the Web inside your test systems. Agilent is a founding member of the LXI consortium.

Agilent Channel Partners

www.agilent.com/find/channelpartners

Get the best of both worlds: Agilent's measurement expertise and product breadth, combined with channel partner convenience.

Microsoft and Windows® are U.S registered trademarks of the Microsoft Corporation.

www.agilent.com

www.agilent.com/find/b2900a

For more information on Agilent Technologies' products, applications or services, please contact your local Agilent office. The complete list is available at:

www.agilent.com/find/contactus

Americas

Canada	(877) 894 4414
Brazil	(11) 4197 3500
Latin America	305 269 7500
Mexico	01800 5064 800
United States	(800) 829 4444

Asia Pacific

Australia	1 800 629 485
China	800 810 0189
Hong Kong	800 938 693
India	1 800 112 929
Japan	0120 (421) 345
Korea	080 769 0800
Malaysia	1 800 888 848
Singapore	1 800 375 8100
Taiwan	0800 047 866
Thailand	1 800 226 008

Europe & Middle East

Austria	43 (0) 1 360 277 1571
Belgium	32 (0) 2 404 93 40
Denmark	45 70 13 15 15
Finland	358 (0) 10 855 2100
France	0825 010 700*
	*0.125 €/minute
Germany	49 (0) 7031 464 6333
Ireland	1890 924 204
Israel	972-3-9288-504/544
Italy	39 02 92 60 8484
Netherlands	31 (0) 20 547 2111
Spain	34 (91) 631 3300
Sweden	0200-88 22 55
Switzerland	0800 80 53 53
United Kingdom	44 (0) 118 9276201

Other European Countries:

www.agilent.com/find/contactus

Revised: July 8, 2010

Product specifications and descriptions in this document subject to change without notice.

© Agilent Technologies, Inc. 2011
Printed in USA, June 22, 2011
5990-7141EN



Agilent Technologies